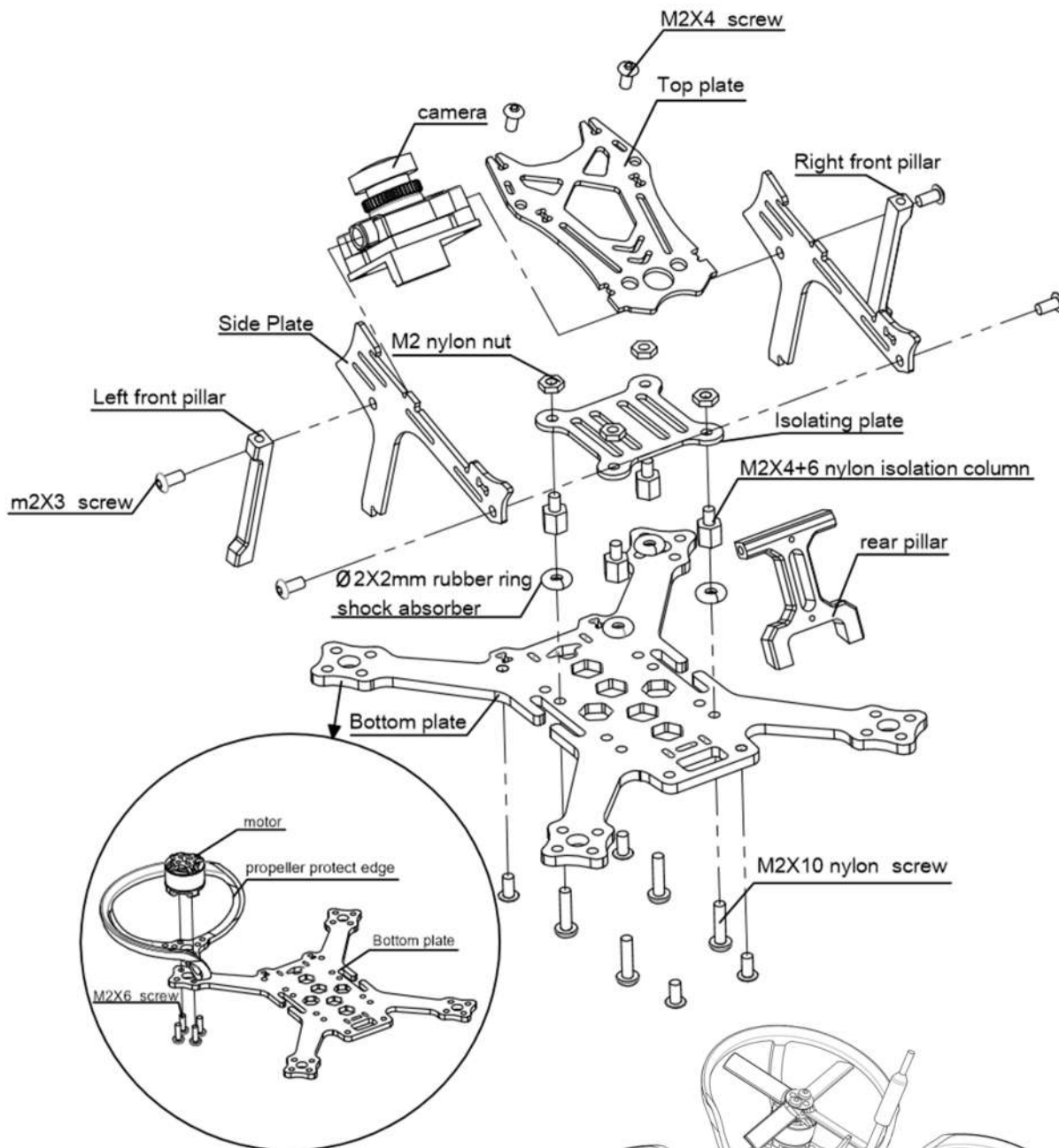


# Assembly schematic for 3B-R MINI 100F



## What you need to complete the drone:

- 1、 Battery:3S 450mA~850mA
- 2、 ESC: 25A ESC X4, F3 or newer flight control(recommended 25A tower-type suite with mounting hole 20×20mm)
- 3、 Propeller: 2 inch, GF2035X4P
- 4、 5,8G VTX, 25mW,RXs
- 5、 Camera : Micro swift

